

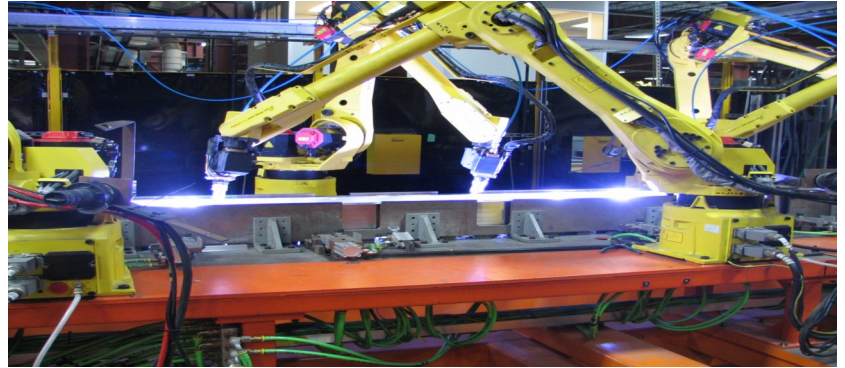
End User Services



30 Hi-Line Drive, Unit A
Union, MO 63084
Fax (888) 556-5952
www.alliedcontrolsllc.com

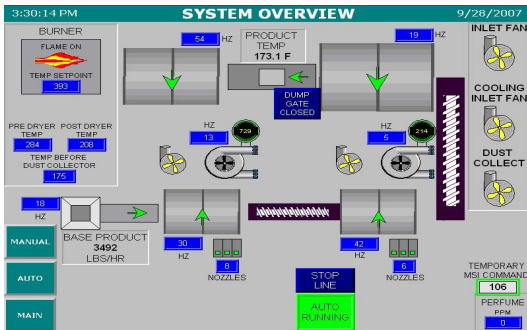
Jerry Skoch, Owner
(314) 740-6534
jskoch@alliedcontrolsllc.com

Josh Gildehaus, Engineering
Manager
(636)390-3301
jgildehaus@alliedcontrolsllc.com



Our Services Include:

- ◆ Turnkey Control System Design
- ◆ CAD Drawings (AutoCAD Electrical & Promis-e)
- ◆ Control Panel Fabrication (UL508A Listing)
- ◆ Multi-Vendor PLC Programming (AB, Siemens, Automation Direct, Mitsubishi, GE, etc.)
- ◆ HMI/MMI Programming (Mitsubishi, RedLion, AB, etc.)
- ◆ System Commission (Local & Nationwide)
- ◆ Motion Control
- ◆ Vision Systems
- ◆ Robotics
- ◆ Project Management
- ◆ MES System Integration
- ◆ Variable Frequency Drives
- ◆ Post Installation Drives
- ◆ Custom Training Classes
- ◆ Contract Support
- ◆ Data Collection & Analysis Systems



Some Highlighted Projects of Allied Controls

Assembly System

Implemented a 25 station system for building electronic component systems using Visual Basic and CompactLogix PLCs.

Pet Litter Plant

Designed a controls system for drying pet litter. The controls included a ControlLogix PLC, Ethernet drives, Flex I/O racks, operator interfaces with RSView-ME, Microsoft SQL Server, Microsoft Access and RSSQL. The RSView application allowed control of the system in manual and automatic modes. Diagnostics screens kept the system running efficiently. Supervisory screens allowed changes to critical system parameters. The RSSQL application collected process data with reporting available in Microsoft Access.

Web Tension System

This control system used a PLC that monitored a load cell. Ten-

sion was adjusted via an Ethernet drive. To minimize cost, a 4" display was provided for control of the system and calibration.

Frame Building Line Support

- Responsibilities included:
- Programming for plant data collection system.
 - Supervision of suppliers.
 - Programming the data tracking logic. The data logic tracked the frame through 37 automated operations and four different processors.
 - Programming a master PLC to do operator login in for the plant. This PLC allowed for 1000 users to login from 300 different locations.
 - Creation of the corporate programming standards.

Food Processing Equipment

Handle all electrical engineering for a local manufacturer who makes Food Coating Machinery. Responsibilities include:

- AutoCAD design of the electrical controls.
- Programming of PLCs and PanelViews, including recipe systems and data collection.
- Startup of equipment
- Phone support with end-customers

Material Handling Robots

Installed four new Fanuc LR Mate 200iC 6 axis robots on existing machines. The robots interfaced with the existing GE Series 90-30 PLCs to load 8x10 file folders into boxes for shipping.

